

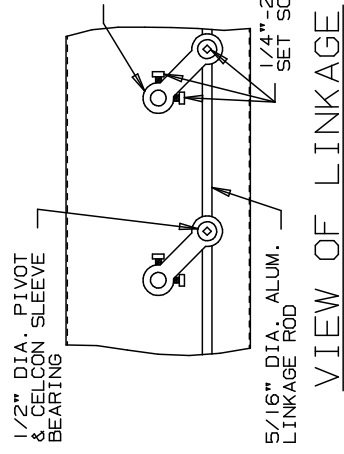
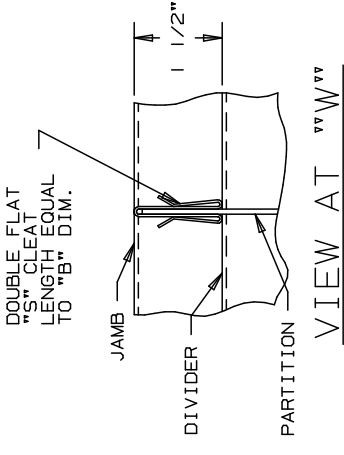
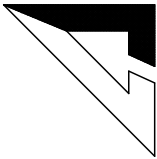
SECTION X - X

SECTION Y - Y

OPTIONS & ACCESSORIES

1. FACTORY-ARRANGED ZONES. WHEN SPECIFIED, LINKAGE WILL GROUP BLADES ONLY AS DESIRED. FINELY ADJUSTED FOR MINIMUM LEAKAGE. DUCT-CLEATS INSTALLED ONLY WHERE NEEDED.
2. INSULATED FRAME. FRAME-ENDS AND BOTTOM (COLD DECK) COVERED WITH 1" INSULATION, RETAINED BY GALVANIZED COVER.
3. DRIVE-SHAFTS AND LINKAGE AT LOWER END OF BLADE-SHAFTS.
4. SPECIAL ADAPTOR CLEATS TO ALLOW 1" INSULATION SPACE BETWEEN ADJACENT ZONE DUCTS.
5. LINKAGE AND DRIVE-EXTENSIONS AT BOTH ENDS OF SHAFTS. THIS FEATURE CONTRIBUTES TO SUPERIOR LEAKAGE PERFORMANCE. (SEE TEST DATA).


- NOTES:**
1. STANDARDS FINISH IS MILL-GALVANIZED.
 2. AVAILABLE BLADE SIZES (DIM. G): 4" TO 8"
 3. TO DISTRIBUTE BLADES INTO DESIRED ZONE-SIZES CUT TO THE 5/16" DIA. LINKAGE ROD ACCORDINGLY.

ARROW UNITED INDUSTRIES
A DIVISION OF MESTEK, INC.
450 RIVERSIDE DRIVE
WYALUSING, PA 18853
TEL: (570)746-1888 FAX: (570)746-9286
WEB ADDRESS: WWW.ARROWUNITED.COM

MODEL 354 ZONE DAMPER

SEE REVERSE SIDE FOR PERFORMANCE DATA & ORDER CHART

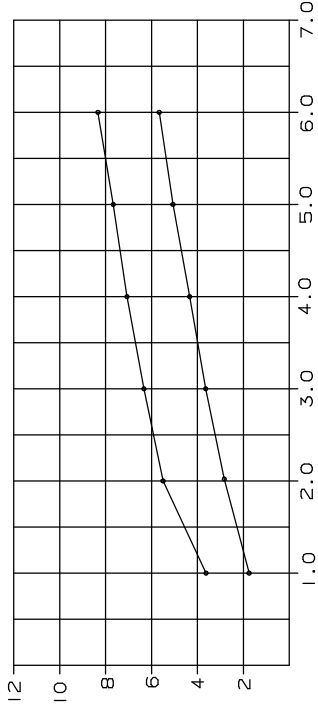


UNION MADE

MARK	QTY.	A	B	C	D	E	F x G (=A)	H	OPTIONS & ACCESSORIES
							X		
							X		
							X		
							X		
							X		
							X		
							X		
							X		

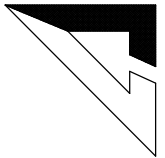
JOB NOTES:

LEAKAGE PERFORMANCE



THE ABOVE GRAPH WAS PRODUCED FROM TEST RESULTS ATTAINED AT AN AMCA REGISTERED LABORATORY. TEST WAS PERFORMED IN ACCORDANCE WITH STANDARD 500-75 AND WITNESSED BY A NATIONALLY-KNOWN ENGINEERING CONCERN. TEST UNIT SIZE WAS 5 X3 COMPRISING THREE ZONES; ONE OF 4-BLADES, ONE OF 2-BLADES, AND ONE SINGLE BLADE. A CLOSING TORQUE OF 4 IN. LBS. PER SQ. FT. WAS APPLIED. THE TWO DECKS WERE TESTED INDEPENDENTLY AND THE GRAPH ABOVE REFLECTS THE COMPOSITE LEAKAGE.

ARCH./ENG. :
 CONTR. :
 PROJECT :
 EDR : ECN : JOB :
 DATE : DWN. : DWG. :



ARROW UNITED INDUSTRIES
 A DIVISION OF MESTEK, INC.
 314 RIVERSIDE DRIVE
 WYALUSING, PA 18853
 TEL: (570)746-1888 FAX: (570)746-9286

AGENT: _____