

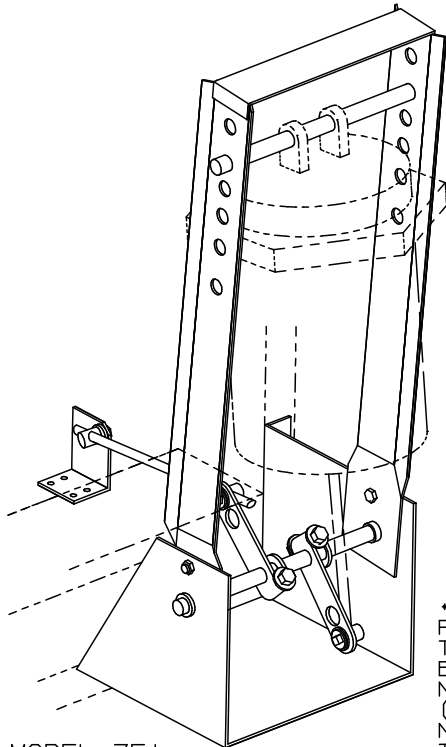
NEW ARROW INTERNAL MOUNT SAVES ENERGY AND LABOR COSTS "UNI-MOUNT" REDUCES FIELD LABOR TIME

- INCREASES EFFICIENCY OF ACTUATOR OPERATION BY TRANSMITTING THE FULL OPERATIVE FORCE TO THE DAMPER WITH NO LOST MOTION. ELIMINATES "FISH-TAILING" AND THE BINDING OF LINKAGE WHICH FREQUENTLY RESULTS.

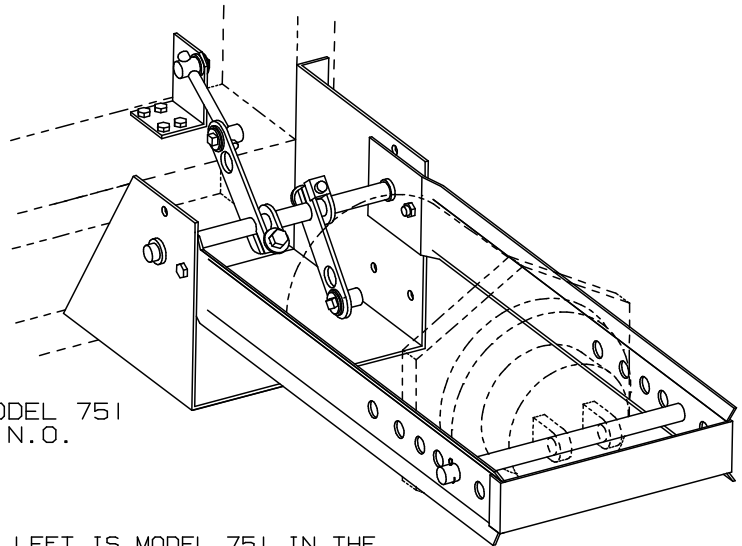
- THE LOCATION OF PNEUMATIC ACTUATORS CAN EASILY BE CHANGED, IN THE FIELD, TO A POSITION EITHER PARALLEL WITH, OR PERPENDICULAR TO, THE AIRSTREAM.

- INCREASED EFFICIENCY OF "UNI-MOUNT" MAY REDUCE THE NUMBER OF ACTUATORS REQUIRED FOR SOME INSTALLATIONS.

- PREVENTS ERRORS BECAUSE IT IS NOT NECESSARY TO KNOW IN ADVANCE WHETHER DAMPER IS N.O. OR N.C.

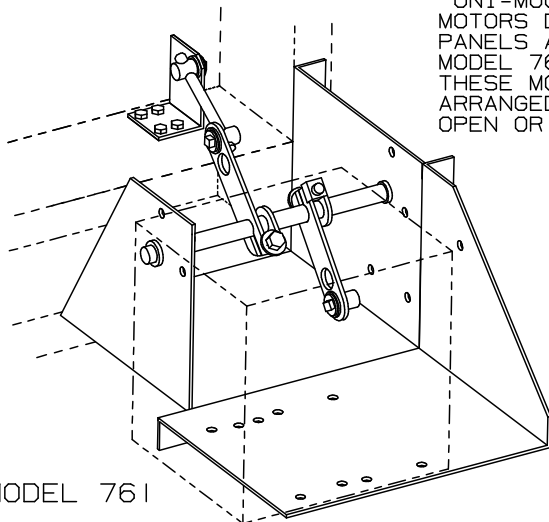


MODEL 751
N.O.



MODEL 751
N.O.

- SHOWN AT LEFT IS MODEL 751 IN THE PERPENDICULAR POSITION. AT RIGHT IS THE SAME MODEL IN THE PARALLEL POSITION. BOTH VIEWS DEPICT THE DAMPER IN A NORMALLY OPEN (N.O.) MODE. THE DAMPER (IN EITHER VIEW) COULD BE CHANGED TO NORMALLY CLOSED (N.C.) SIMPLY BY SHIFTING THE POSITION OF THE CRANK ARM WHICH IS ATTACHED TO THE ACTUATOR, SO THAT THE "STROKE" CAUSES THE SHAFT (AS VIEWED) TO ROTATE CCW.



MODEL 761

- "UNI-MOUNTS" FOR ELECTRIC MOTORS DRIVING 1 OR 2 PANELS ARE ALSO AVAILABLE. MODEL 761 IS SHOWN AT LEFT. THESE MODELS ARE ALSO EASILY ARRANGED FOR EITHER NORMALLY OPEN OR NORMALLY CLOSED DRIVES.

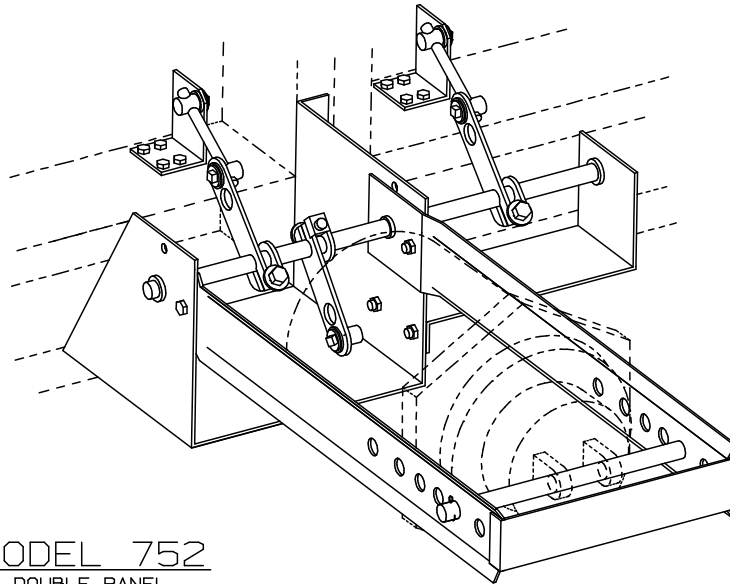
- SIMPLIFIES ORDERING PROCEDURE (PREVENTS POSSIBLE ERRORS). IT IS NOT NECESSARY TO KNOW IN ADVANCE WHETHER DAMPER IS TO BE N.O. OR N.C.

- INCREASES OPERATOR EFFICIENCY.

- EASILY INSTALLED ON DAMPER FRAME AFTER DAMPER IS IN DUCT.

- JACKSHAFTING CAN BE ATTACHED DIRECTLY TO "UNI-MOUNT" TRANSMITTING OPERATORS TORQUE MORE EFFICIENTLY TO ADJACENT DAMPER PANELS - RATHER THAN THROUGH DAMPER BLADES.

UNI-MOUNT THE VERSATILE INTERNAL MOTOR MOUNT



MODEL 752
DOUBLE PANEL

- TWO PANEL DRIVE SYSTEMS WITH ONE ACTUATOR PROVIDE SUBSTANTIALLY IMPROVED RELIABILITY. A 1/2" DIA. DRIVE SHAFT EXTENSION IS USED WITHIN THE "UNI-MOUNT".

• "UNI-MOUNTS", WHEN ORDERED WITH ARROW DAMPERS, ARE EASILY INSTALLED ON DAMPERS AFTER THE DAMPER IS IN THE DUCT. "UNI-MOUNT" ACCEPTS THE PNEUMATIC ACTUATORS OF ALL MAJOR COMPANIES (3", 4", AND 6" SIZES), WITH OR WITHOUT PILOT POSITIONING RELAYS INSTALLED.

MAXIMUM RECOMMENDED APPLICATIONS

BASED ON A PARALLEL DAMPER IS A SYSTEM WITH 2" S.P. AND 1500 FPM (MAXIMUM).

INDICATED BELOW ARE SUGGESTED LIMITATIONS OF DAMPER SQUARE FEET TO BE DRIVEN USING MULTI-PANEL MODELS.

PANELS DRIVEN	1770	PIN-LOCK	ARROW-FOIL
2	40	32	40

"UNI-MOUNTS" ARE REMOVED FROM DAMPERS FOR SHIPMENT, PACKED WITH INSTRUCTIONS AND HARDWARE FOR FIELD INSTALLATION.

FOR PNEUMATIC

FOR ELECTRIC

MODEL #751 ... (1) OPERATOR DRIVING (1) PANEL ... MODEL #761
MODEL #752 ... (1) OPERATOR DRIVING (2) PANELS ... MODEL #762

WHEN PLACING ORDERS FOR "UNI-MOUNTS" SPECIFY ACTUATOR, MANUFACTURER, AND MODEL NUMBER.

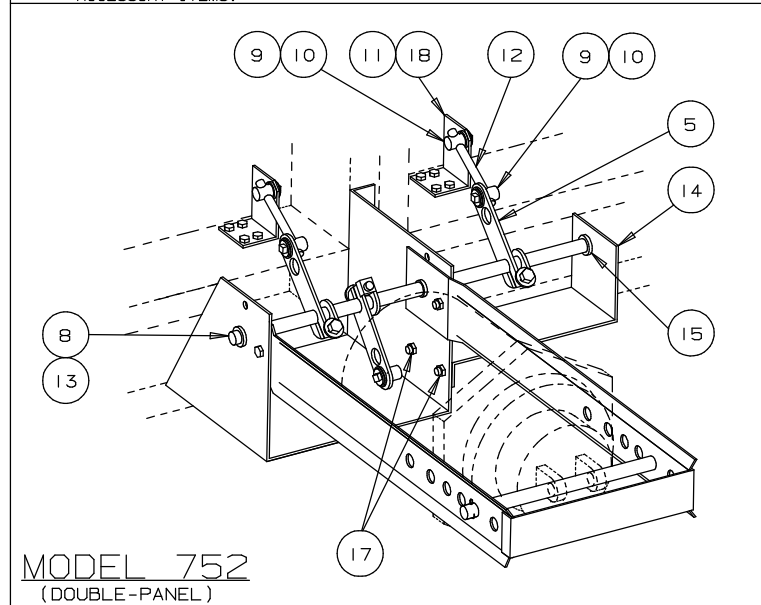
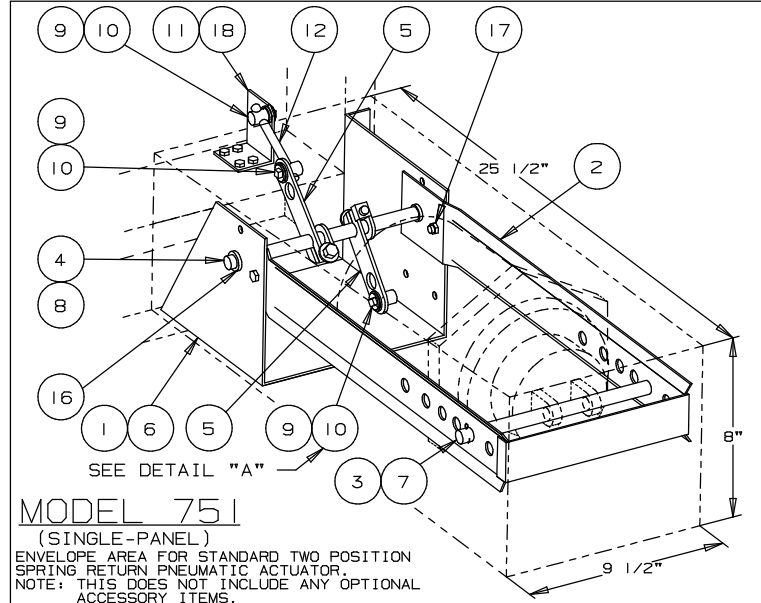


ARROW UNITED INDUSTRIES
A DIVISION OF MESTEK, INC.

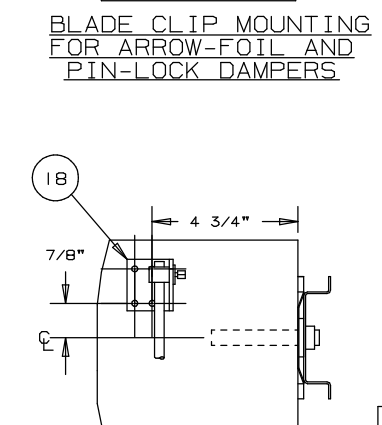
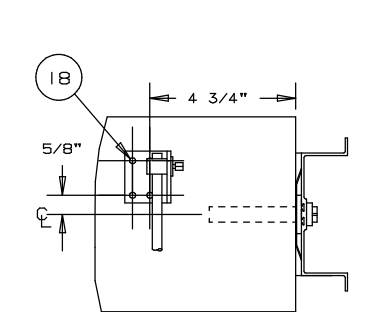
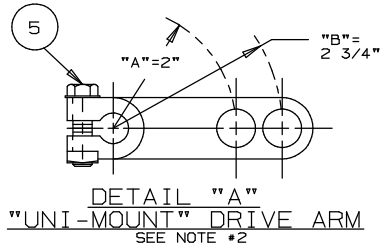
314 RIVERSIDE DRIVE
WYALUSING, PA 18853

TEL: (570) 746-1888 FAX: (570) 746-9286
WEB ADDRESS: WWW.ARROWUNITED.COM

AGENT: _____



UNI-MOUNT PNEUMATIC PARTS LIST

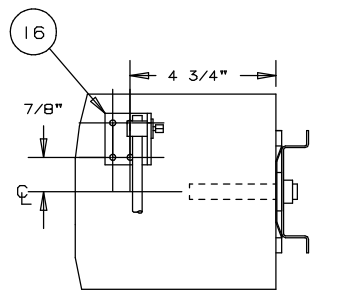
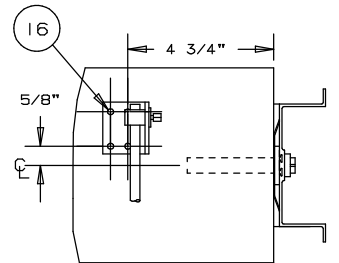
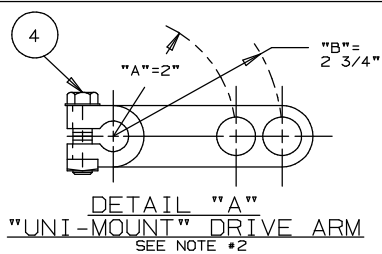


ITEM	MODEL/QTY.		PART NUMBER	DESCRIPTION
	751	752		
1	1	1	40-0047	MOUNTING BRACKET
2	1	1	40-0055	"U"-BRACKET
3	1	1	40-0045	PIVOT ROD
4	1	-	36-0039	1/2" DIAMETER STEEL SHAFT
5	2	3	36-0199-01	DRIVE ARM ASSEMBLY
6	6	6	-----	SCREW 14-10 HEX HD. TYPE "A"
7	2	2	40-0091	RETAINING PIN
8	2	2	38-0035	SNAP RING
9	2	4	36-0215-01	PLATED STL. TRUNNION ASSEMBLY
10	2	4	34-0061	CELCON BEARING
11	1	2	38-0051-01	PLATED STEEL BLADE CLIP
12	1	2	38-0053	DRIVE ROD 5/16" DIA. ALUM., 8" LG.
13	-	1	36-0052	STEEL SHAFT, 16 1/2" LG.
14	-	1	40-0054	JACKSHAFT BRACKET
15	-	1	34-0013	NYLON BUSHING
16	2	2	34-0007-05	BRONZE BUSHING
17	2	4	-----	1/4-20x5/8" BOLT, NUT, & LK. WASHER
18	4	8	-----	BOLT, NUT & LOCK WASHER
				ARROW-FOIL: 10-24 x 1" LG
				1770/395: 10-24 x 1/2" LG

- NOTES:**
- THE 1" LONG ROD USED TO RETAIN PIVOT-TRUNNION DURING SHIPMENT, MAY BE DISCARDED AFTER INSTALLATION.
 - OPTIMUM ROTATION AND CLOSURE WILL BE ACHIEVED WITH ACTUATOR STROKES AS FOLLOWS (SEE "UNI-MOUNT" DRIVE ARM DETAIL).
USE POSITION "A" FOR 3" STROKE ACTUATOR
USE POSITION "B" FOR 4" STROKE ACTUATOR
THE DAMPER STOPS ARE PURPOSELY ARRANGED TO "LOCK-UP" AND REDUCE THESE STROKES BY 1/16" TO 1/8".
FOR NORMALLY CLOSED OPERATION
 - DAMPER MAY BE CHANGED TO NORMALLY CLOSED OPERATION, SIMPLY BY SHIFTING POSITION OF THE CRANK ARM (WHICH IS ATTACHED TO THE ACTUATOR) BY 180° AROUND SHAFT, SO THAT IT WILL ROTATE IN THE OPPOSITE (OR CCW WHEN VIEWED) DIRECTION WHEN ACTUATOR IS STROKED.

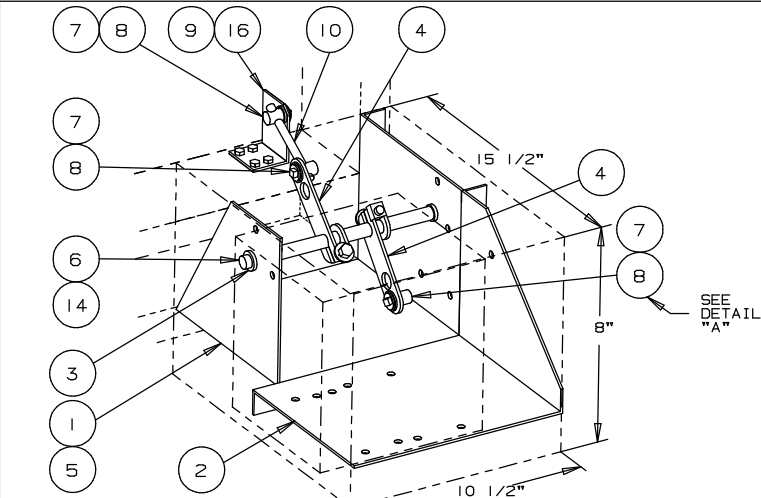
ARROW UNITED INDUSTRIES
A DIVISION OF MESTEK, INC.
314 RIVERSIDE DRIVE
WYALUSING, PA 18853
TEL: (570) 746-1888 FAX: (570) 746-9286
WEB ADDRESS: WWW.ARROWUNITED.COM

UNI-MOUNT™ ELECTRIC PARTS LIST



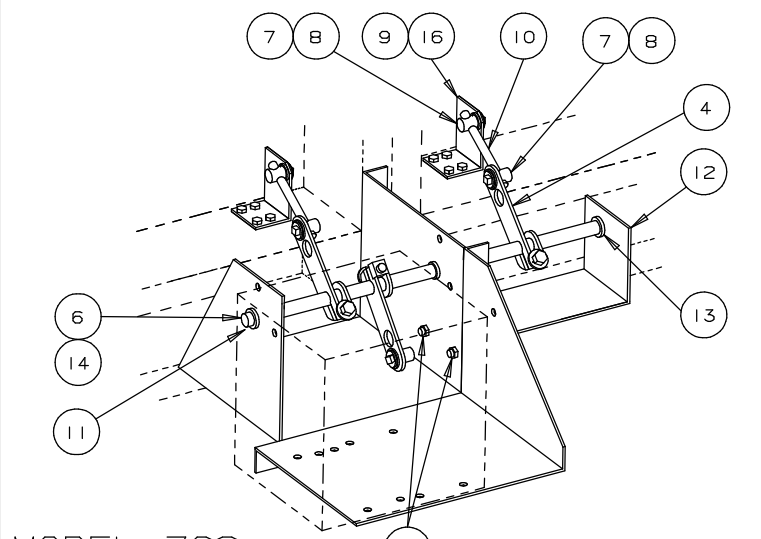
ITEM	MODEL/QTY.		PART NUMBER	DESCRIPTION
	761	762		
1	1	1	40-0047	MOUNTING BRACKET
2	1	1	40-0062	MOUNTING BRACKET - ELECTRIC
3	1	-	36-0039	1/2" DIAMETER STEEL SHAFT
4	2	3	36-0199-01	DRIVE ARM ASSEMBLY
5	6	6	-----	SCREW 14-10 HEX HD. TYPE "A"
6	2	2	38-0035	SNAP RING
7	3	5	36-0215-01	PLATED STL. TRUNNION ASSEMBLY
8	3	5	34-0061	CELCON BEARING
9	1	2	38-0051-01	PLATED STEEL BLADE CLIP
10	1	2	38-0053	DRIVE ROD 5/16" DIA. ALUM., 8" LG.
11	-	1	36-0052	STEEL SHAFT, 16 1/2" LG.
12	-	1	40-0054	JACKSHAFT BRACKET
13	-	1	34-0013	NYLON BUSHING
14	2	2	34-0007-05	BRONZE BUSHING
15	-	2	-----	1/4-20x5/8" BOLT, NUT, & LK. WASHER
16	4	8	-----	BOLT, NUT & LOCK WASHER
				ARROW-FOIL: 10-24 x 1" LG
				1770/395: 10-24 x 1/2" LG

- NOTES:**
- THE 1" LONG ROD USED TO RETAIN PIVOT-TRUNNION DURING SHIPMENT, MAY BE DISCARDED AFTER INSTALLATION.
 - OPTIMUM ROTATION AND CLOSURE WILL BE ACHIEVED BY THE ADJUSTABLE SWIVEL ON THE MOTOR DRIVE ARM #36-0199-01. THE DAMPER STOPS ARE PURPOSELY ARRANGED TO "LOCK-UP" AND REDUCE THESE STROKES BY 1/16" TO 1/8".
FOR NORMALLY CLOSED OPERATION
 - DAMPER MAY BE CHANGED TO NORMALLY CLOSED OPERATION, SIMPLY BY SHIFTING POSITION OF THE CRANK ARM (WHICH IS ATTACHED TO THE ACTUATOR) BY 180° AROUND SHAFT, SO THAT IT WILL ROTATE IN THE OPPOSITE (OR CCW) DIRECTION AS SHOWN.



MODEL 761
 (SINGLE-PANEL)

ENVELOPE AREA FOR STANDARD TWO POSITION SPRING RETURN ELECTRIC ACTUATOR.
 NOTE: THIS DOES NOT INCLUDE ANY OPTIONAL ACCESSORY ITEMS.



MODEL 762
 (DOUBLE-PANEL)

ARROW UNITED INDUSTRIES
 A DIVISION OF MESTEK, INC.

314 RIVERSIDE DRIVE
 WYALUSING, PA 18853

TEL: (570) 746-1888 FAX: (570) 746-9286
 WEB ADDRESS: WWW.ARROWUNITED.COM