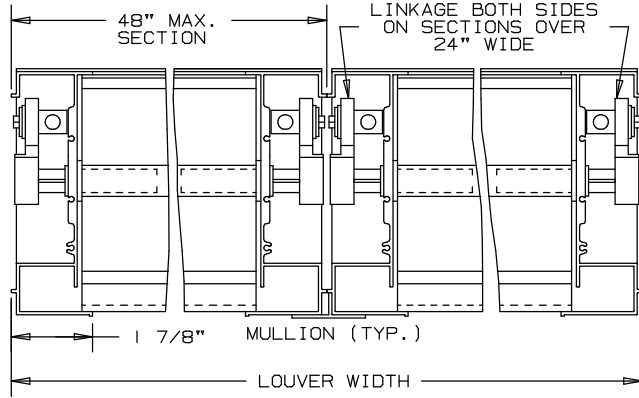
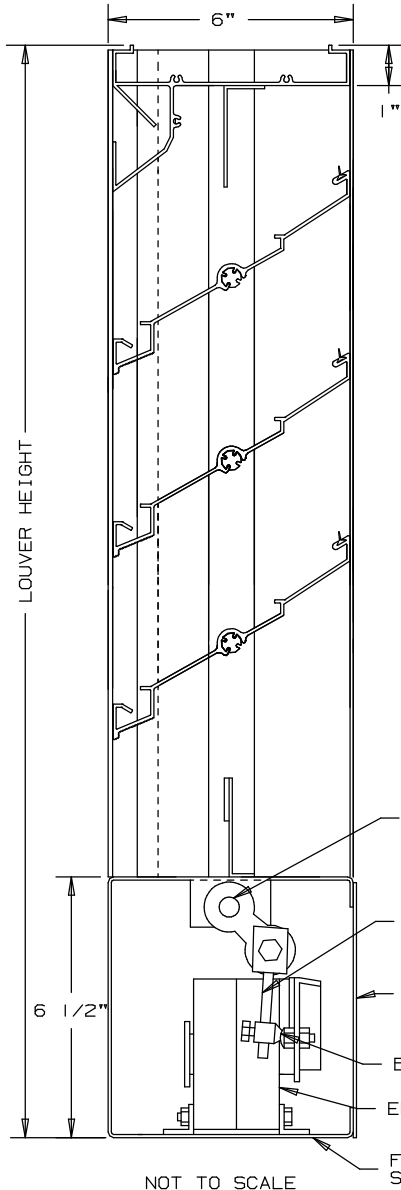


# ARROW EXTRUDED ALUMINUM LOUVERS ADJUSTABLE TYPE 6" DEEP

# TYPE EA-651-D-M

## DRAIN BLADE - CONCEALED ACTUATOR



### SPECIFICATIONS

BEARINGS: CELCON BEARING MATERIAL SO THAT THERE WILL BE NO METAL TO METAL FRICTION. OPERATING LINKAGE CONCEALED IN FRAME, OUT OF THE AIR STREAM.

MATERIAL: FRAME AND BLADE EXTRUDED ALUMINUM 6063-T6/T52 ALLOY .080" THK., BLADES ON 4 1/2" CENTERS.  
FACE OF LOUVER: FULL WIDTH SILL WITH DRAIN HEAD AND DRAIN BLADES CONTAINED WITHIN THE DRAIN JAMBS.

LINKAGE: EXTRUDED ALUMINUM, CONCEALED IN CHANNEL OUT OF AIRSTREAM. PIVOTS ARE .50" DIA. MACHINED STEEL, CADMIUM PLATED AND CHROMATE TREATED. PIVOTS ROTATE IN A CELCON BEARING. A .312" DIA. ALUMINUM LINKAGE ROD IS LOCKED TO THE PIVOT BY A 1/4-20 SET SCREW WITH AN EPOXY LOCKING PATCH.  
SHAFTS: .50" DIA. ALUMINUM "PIN-LOCK" ROD.  
SEALS: EXTRUDED SILICONE RUBBER SEAL AT BLADE EDGE. POLYURETHANE AT THE JAMBS.  
SCREENS: WHEN INDICATED, IN A REMOVABLE FRAME.  
BIRD SCREEN - 1/2" FLATTENED ALUMINUM, .051" THK.  
OR - 1/2" SQ. MESH, INTERMEDIATE DOUBLE-CRIMPED ALUMINUM WIRE, .063 DIA.  
OR - 18/16 MESH, .011" DIA. ALUMINUM WIRE, INSECT SCREEN.


FINISH: MILL.  
ACTUATOR: 120 VAC, SPRING RETURN NORMALLY CLOSED  
133 IN-LBS. TORQUE.  
LOUVER SIZES: 12" x 19" MINIMUM PANEL SIZE.  
48" x 96" MAXIMUM PANEL SIZE.

### OPTIONAL

- OTHER SCREENS
- ARCHITECTURAL FINISHES

NOMINAL DEDUCTIONS WILL BE MADE TO THE OPENING SIZES GIVEN.

ITEM	QTY.	WIDTH	HEIGHT	WIDTH	HEIGHT	MULL	TYPE	LOC			
		OPENING SIZE		LOUVER SIZE			SCREENS				



**ARROW UNITED INDUSTRIES**  
A DIVISION OF MESTEK, INC.  
314 RIVERSIDE DRIVE  
WYALUSING, PA 18853  
TEL: (570) 746-1888 FAX: (570) 746-9286

AGENT: \_\_\_\_\_

ARCH./ENG. : \_\_\_\_\_

CONTR. : \_\_\_\_\_

PROJECT : \_\_\_\_\_

EDR: \_\_\_\_\_ ECN: \_\_\_\_\_ JOB: \_\_\_\_\_

DATE: \_\_\_\_\_ DWN.: \_\_\_\_\_ DWG.: \_\_\_\_\_