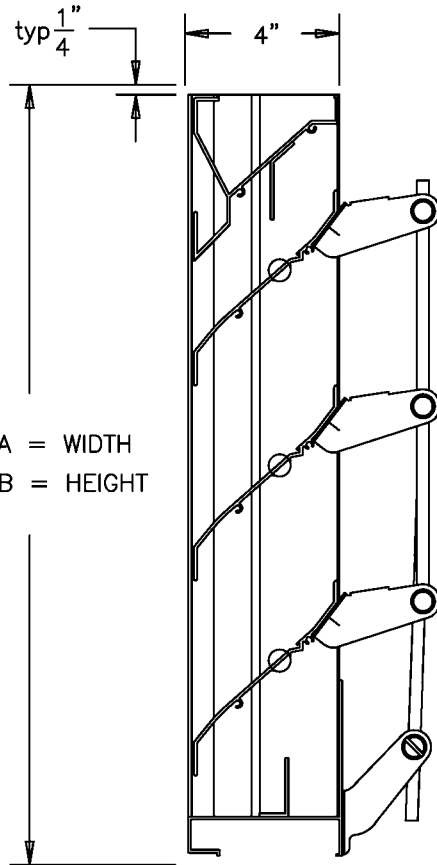
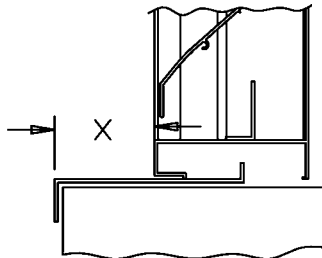


# EXTRUDED ALUMINUM, 4" DEEP, ADJUSTABLE K TYPE BLADE

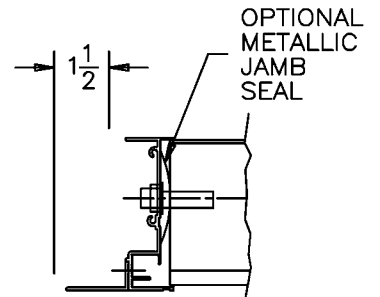


SECTION VIEW

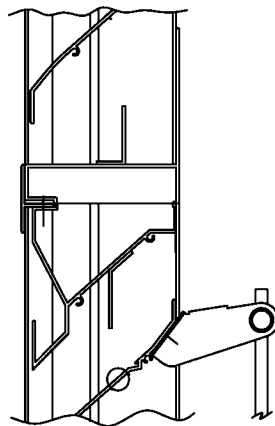
- MODEL LE-48A  
STANDARD SPECIFICATIONS**
- FRAME: 4" DEEP CHANNEL, .081 THICK 6063-T5 EXTRUDED ALUMINUM ALLOY.
  - BLADES: .081" THICK 6063-T5 EXTRUDED ALUMINUM ALLOY.
  - FINISH: MILL.
  - SCREEN: 1/2" REMOVABLE EXPANDED ALUMINUM BIRD SCREEN, LOCATED ON EXTERIOR.
  - AXLES: 1/2" DIAMETER ALUMINUM
  - BEARINGS: POLYMER PLASTIC SPLIT.
  - LINKAGE: PLATED STEEL BRACKETS, BRASS BARRELS, 5/16" DIA PLATED STEEL LINKAGE ROD.
  - ACTUATOR: INDIVIDUAL PANEL WING NUT. SEE ACTUATOR BULLETIN FOR OTHER SELECTIONS.
  - MAXIMUM PANEL SIZE: 60" X 96" W/O SEALS OR W/ BLADE SEALS ONLY.  
48" X 72" WITH BLADE AND JAMB SEALS.
  - MINIMUM PANEL SIZE: 12" X 12"
  - DIMENSIONS: "A" (WIDTH) AND "B" (HEIGHT) ARE OPENING SIZES. LOUVERS ARE MADE 1/2" UNDERSIZE.



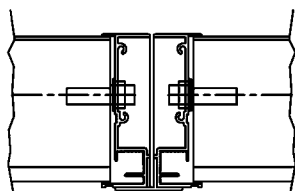
EXTENDED SILL  
OPTIONAL



FLANGED FRAME  
OPTIONAL  
(JAMB SHOWN)



STANDARD HORIZONTAL  
MULLION



STANDARD VERTICAL  
MULLION

**awv** american warming  
and ventilating

A MESTEK COMPANY

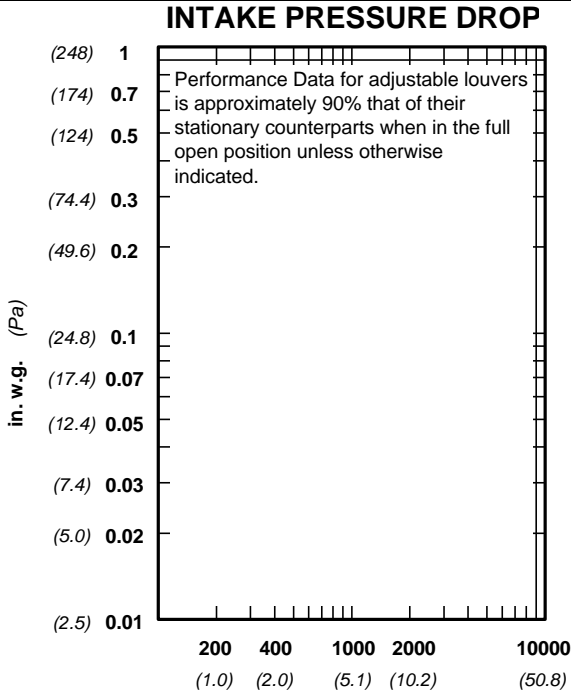
7301 INTERNATIONAL DRIVE HOLLAND, OHIO  
Phone (419) 865-5000 Fax (419) 865-1375

LE-48A ADJUSTABLE LOUVER

DRN. BY ESS	DWG. NO. LE-48A	REV.
DATE 12-12-00		

**Water Penetration Pressure Drop** : Performance Data for adjustable louvers is approximately 90% that of their stationary counterparts when in the full open position unless otherwise indicated.

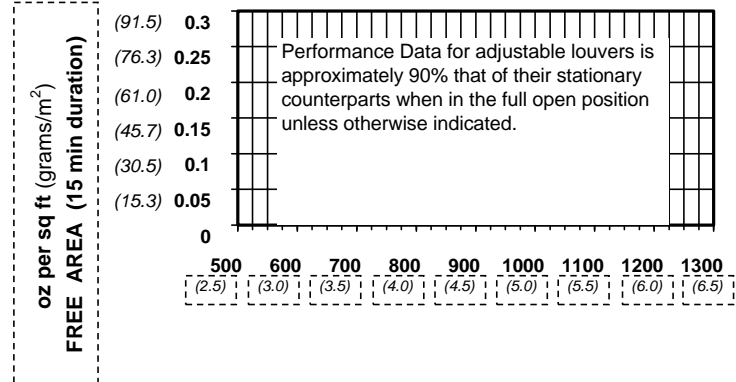
**Free Area** : 7.61 sq ft (0.707 sq m) = 47.6% for 48" x 48" (1.22m x 1.22m) test size



### FREE AREA IN SQUARE FEET (sq meters)

HEIGHT	WIDTH								
	in. mm	12 305	18 457	24 610	30 762	36 914	42 1067	48 1219	60 1524
12	0.20	0.32	0.45	0.58	0.71	0.83	0.96	1.22	
305	0.019	0.030	0.042	0.054	0.066	0.077	0.089	0.113	
24	0.59	0.97	1.35	1.73	2.11	2.49	2.87	3.63	
610	0.055	0.090	0.125	0.161	0.196	0.231	0.267	0.337	
36	1.11	1.84	2.56	3.28	4.01	4.73	5.45	6.90	
914	0.103	0.171	0.238	0.305	0.373	0.439	0.506	0.641	
48	1.56	2.56	3.57	4.58	5.59	6.60	7.61	9.63	
1219	0.145	0.238	0.332	0.425	0.519	0.613	0.707	0.895	
60	1.97	3.25	4.53	5.81	7.08	8.36	9.64	12.20	
1524	0.183	0.302	0.421	0.540	0.658	0.777	0.896	1.133	
72	2.36	3.89	5.43	6.96	8.49	10.02	11.55	14.62	
1829	0.219	0.361	0.504	0.647	0.789	0.931	1.073	1.358	
84	2.74	4.52	6.30	8.08	9.86	11.63	13.41	16.97	
2134	0.255	0.420	0.585	0.751	0.916	1.080	1.246	1.577	
96	3.31	5.46	7.61	9.76	11.91	14.05	16.20	20.50	
2438	0.308	0.507	0.707	0.907	1.106	1.305	1.505	1.905	

**VELOCITY THROUGH FREE AREA fpm (m/s)**  
 standard air - .075 lbs per cu ft  
 Ratings do not include the effect of a wire bird screen  
 Test based on a 48" x 48" test size per AMCA Standard 51



**Leakage:**

We have shown two leakage values for the louver sizes below. The upper values with blade seals, and lower values are with optional blade and jamb seals. Values were derived from tests performed in accordance with AMCA 500. Values are in total (CFM) at 1 in wg differential pressure.

**TOTAL LEAKAGE IN SCFM @ 1 IN wg DP**  
**CLOSING TORQUE**  
 IN inch/pounds

Openings that require multiple louver panels in both width and height will require internal structural supports. It is recommended that large openings be divided with structural members so that the louvers will span either width or height with a single panel. Unusually high wind loading may require maximum panel size to be reduced, check with factory before ordering Structural supports and mounting accessories are not supplied by AWW as a standard.

**Operating Force Factor:**

Louvers are normally operated by applying a force to the blade to blade linkage whereas dampers are driven through the blade axles. Because of this fact, simple operating torques cannot be published. The factors shown are to be used with the data shown in our louver actuator selection guide found in our louver actuator price list.

HEIGHT		WIDTH					
		SEALS	12	24	36	48	60
12	BLADE	67	87	107	127	147	
	BLD & JMB	21	28	34	41	n/a	
24	BLADE	153	203	253	303	353	
	BLD & JMB	33	83	100	117	n/a	
36	BLADE	238	318	398	478	558	
	BLD & JMB	112	139	165	192	n/a	
48	BLADE	316	416	516	616	716	
	BLD & JMB	145	178	211	245	n/a	
60	BLADE	401	531	661	791	921	
	BLD & JMB	190	234	277	320	n/a	
72	BLADE	479	629	779	929	1079	
	BLD & JMB	222	273	323	373	n/a	
84	BLADE	564	743	924	1104	1285	
	BLD & JMB	n/a	n/a	n/a	n/a	n/a	
96	BLADE	641	843	1042	1242	1442	
	BLD & JMB	n/a	n/a	n/a	n/a	n/a	

HEIGHT		WIDTH					
		SEALS	12	24	36	48	60
12	BLADE	22	50	78	106	135	
	BLD & JMB	67	122	176	231	n/a	
24	BLADE	25	56	87	118	151	
	BLD & JMB	68	124	181	237	n/a	
36	BLADE	29	63	96	130	166	
	BLD & JMB	69	127	185	244	n/a	
48	BLADE	32	67	103	139	178	
	BLD & JMB	70	128	188	248	n/a	
60	BLADE	35	74	112	151	194	
	BLD & JMB	71	131	193	254	n/a	
72	BLADE	38	79	119	160	206	
	BLD & JMB	71	133	196	258	n/a	
84	BLADE	42	85	128	172	221	
	BLD & JMB	n/a	n/a	n/a	n/a	n/a	
96	BLADE	44	90	135	180	233	
	BLD & JMB	n/a	n/a	n/a	n/a	n/a	