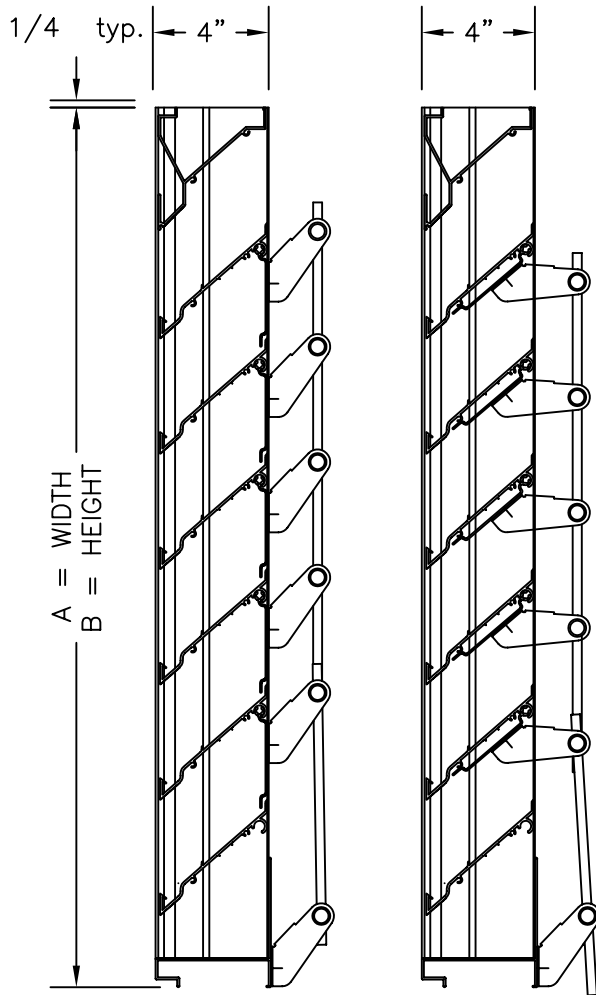


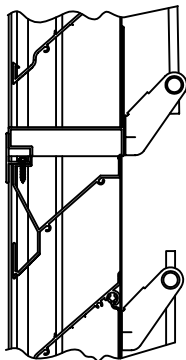
EXTRUDED ALUMINUM, 4" DEEP, COMBINATION ADJUSTABLE AND STATIONARY TYPE BLADE



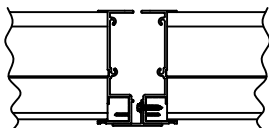
SECTION VIEW
(BLADES CLOSED)

SECTION VIEW
(BLADES OPEN)

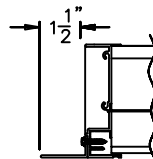
- MODEL LE-45C
STANDARD SPECIFICATION
- FRAME: 4" DEEP CHANNEL .081 THICK 6063-T5 ALUMINUM ALLOY
 - BLADES: .081" THICK 6063-T5 ALUMINUM ALLOY.
 - AXLES: FULL BLADE ALUMINUM EXTRUSION
 - LINKAGE: PLATED STEEL BRACKETS, BRASS BARRELS, 5/16 DIA. PLATED STEEL LINKAGE ROD
DOUBLE LINKAGE REQUIRED FOR PANELS OVER 48" WIDE.
 - SEALS: VINYL ON BLADE.
 - SCREEN: 1/2" REMOVABLE EXPANDED ALUMINUM BIRD SCREEN, LOCATED ON EXTERIOR.
 - ACTUATOR: INDIVIDUAL PANEL WINGNUT, SEE ACTUATOR BULLETIN FOR OTHER SELECTIONS.
 - FINISH: MILL
 - MAX. PANEL SIZE: 60 x 96
 - MIN. PANEL SIZE: 12 x 13
 - DIMENSIONS: "A" (WIDTH) AND "B" (HEIGHT) ARE OPENING SIZES. LOUVERS ARE MADE 1/2" UNDERSIZED



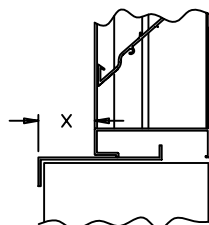
STANDARD HORIZONTAL
MULLION



STANDARD VERTICAL
MULLION



FLANGED FRAME
OPTIONAL
(JAMB SHOWN)



EXTENDED SILL
OPTIONAL



American Warming and Ventilating certifies that the model LE-45C louver shown herein is licensed to bear the AMCA Seal. The ratings shown are based on tests and procedures performed in accordance with AMCA Publication 511 and comply with the requirements of the AMCA Certified Ratings Program. The AMCA Certified Ratings Seal applies to air performance ratings and water penetration ratings.

awv american warming and ventilating

A MESTEK COMPANY

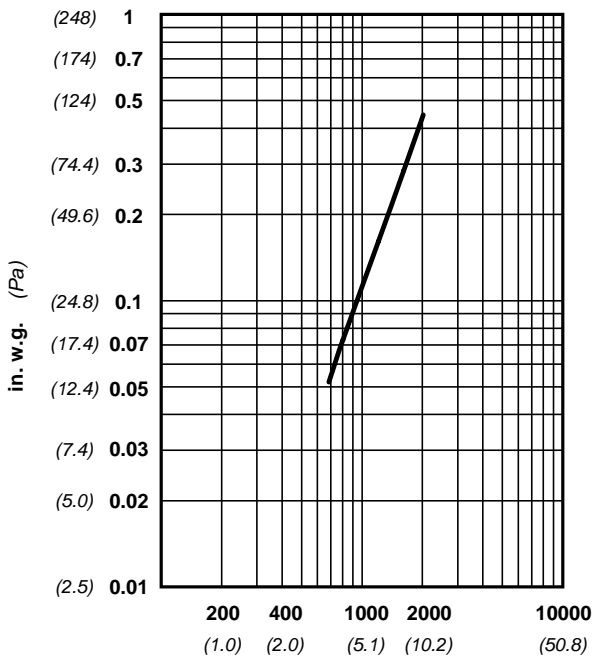
7301 INTERNATIONAL DRIVE HOLLAND, OHIO
Phone (419) 865-5000 Fax (419) 865-1375

LE-45C COMBINATION LOUVER

DRN. BY JVC	DWG. NO. LE-45C	REV.
DATE 8/13/09		

Water Penetration : 0.01 oz (3.0 g) at 1250 fpm (6.35 m/s) recommended free area velocity
Pressure Drop : 0.17 in wg (42.3 Pa.) at 1250 fpm (6.35 m/s) and 8475 scfm (4.0 scm/s)
Free Area : 6.78 sq ft (0.630 sq m) = 42.3% for 48" x 48" (1.22m x 1.22m) test size

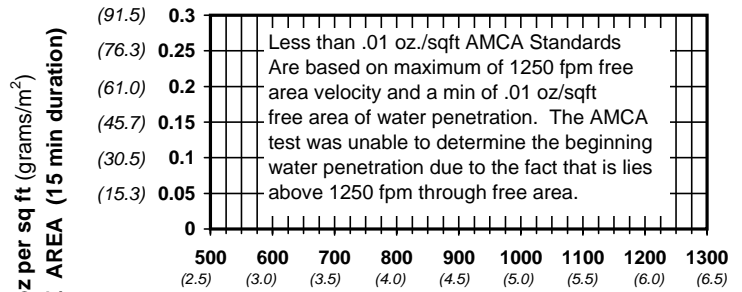
INTAKE PRESSURE DROP



FREE AREA IN SQUARE FEET (sq meters)

HEIGHT	WIDTH								
	in. mm	12 305	18 457	24 610	30 762	36 914	42 1067	48 1219	60 1524
13	0.14	0.23	0.32	0.41	0.50	0.59	0.68	0.86	0.86
24	0.55	0.91	1.27	1.63	1.99	2.35	2.71	3.43	3.43
36	0.97	1.60	2.23	2.86	3.48	4.11	4.74	6.00	6.00
48	1.38	2.28	3.18	4.08	4.98	5.88	6.77	8.57	8.57
60	1.80	2.97	4.14	5.30	6.47	7.64	8.81	11.14	11.14
72	2.22	3.65	5.09	6.53	7.97	9.40	10.84	13.71	13.71
84	2.63	4.34	6.05	7.75	9.46	11.17	12.87	16.29	16.29
96	3.05	5.02	7.00	8.98	10.95	12.93	14.90	18.86	18.86

WATER PENETRATION



VELOCITY THROUGH FREE AREA fpm (m/s)
 standard air - .075 lbs per cu ft

Ratings do not include the effect of a wire bird screen
 Test based on a 48" x 48" test size per AMCA Standard 511

VELOCITY THROUGH FREE AREA fpm (m/s)

Both maximum recommended free area velocity and beginning of water penetration are 1250 fpm at standard air -.075 lbs per cu ft. The above water penetration data is based on mill finish, 48" x 48" test size per AMCA Standard 511.



American Warming and Ventilating certifies that the model LE-45C louver shown herein is licensed to bear the AMCA Seal. The ratings shown are based on tests and procedures performed in accordance with AMCA Publication 511 and comply with the requirements of the AMCA Certified Ratings Program. The AMCA Certified Ratings Seal applies to air performance ratings and water penetration ratings.

LE-45C

Leakage:

We have shown two leakage values for the louver sizes below. The upper values with blade seals, and lower values are with optional blade and jamb seals. Values were derived from tests performed in accordance with AMCA 500. Values are in total (CFM) at .5 in wg differential pressure.

TOTAL LEAKAGE IN SCFM @ .5 IN wg DP
 CLOSING TORQUE IN inch/pounds

HEIGHT		WIDTH					
		SEALS	12	24	36	48	60
13	BLADE	5	11	16	22	27	
	BLD & JMB	4	8	13	17	21	
24	BLADE	11	22	33	44	54	
	BLD & JMB	8	17	25	34	42	
36	BLADE	16	33	49	65	82	
	BLD & JMB	13	25	38	50	63	
48	BLADE	22	44	65	87	109	
	BLD & JMB	17	34	50	67	84	
60	BLADE	27	54	82	109	136	
	BLD & JMB	21	42	63	84	105	
72	BLADE	33	65	98	131	163	
	BLD & JMB	25	50	75	101	126	
84	BLADE	38	76	114	152	190	
	BLD & JMB	29	59	88	117	147	
96	BLADE	44	87	131	174	218	
	BLD & JMB	34	67	101	134	168	

Openings that require multiple louver panels in both width and height will require internal structural supports. It is recommended that large openings be divided with structural members so that the louvers will span either width or height with a single panel. Unusually high wind loading may require maximum panel size to be reduced, check with factory before ordering Structural supports and mounting accessories are not supplied by AWW as a standard.

Operating Force Factor:

Louvers are normally operated by applying a force to the blade to blade linkage whereas dampers are driven through the blade axles. Because of this fact, simple operating torques cannot be published. The factors shown are to be used with the data shown in our louver actuator selection guide found in our louver actuator price list.

HEIGHT		WIDTH					
		SEALS	12	24	36	48	60
13	BLADE	6	9	14	16	18	
	BLD & JMB	8	11	17	20	23	
24	BLADE	11	17	26	31	36	
	BLD & JMB	14	21	33	39	45	
36	BLADE	14	36	53	62	72	
	BLD & JMB	18	42	66	78	90	
48	BLADE	22	50	79	94	108	
	BLD & JMB	27	63	99	117	135	
60	BLADE	29	67	106	125	144	
	BLD & JMB	36	84	132	156	180	
72	BLADE	36	84	132	156	180	
	BLD & JMB	45	105	165	195	225	
84	BLADE	43	100	158	187	216	
	BLD & JMB	54	125	198	234	270	
96	BLADE	50	116	185	218	252	
	BLD & JMB	63	145	231	273	315	