

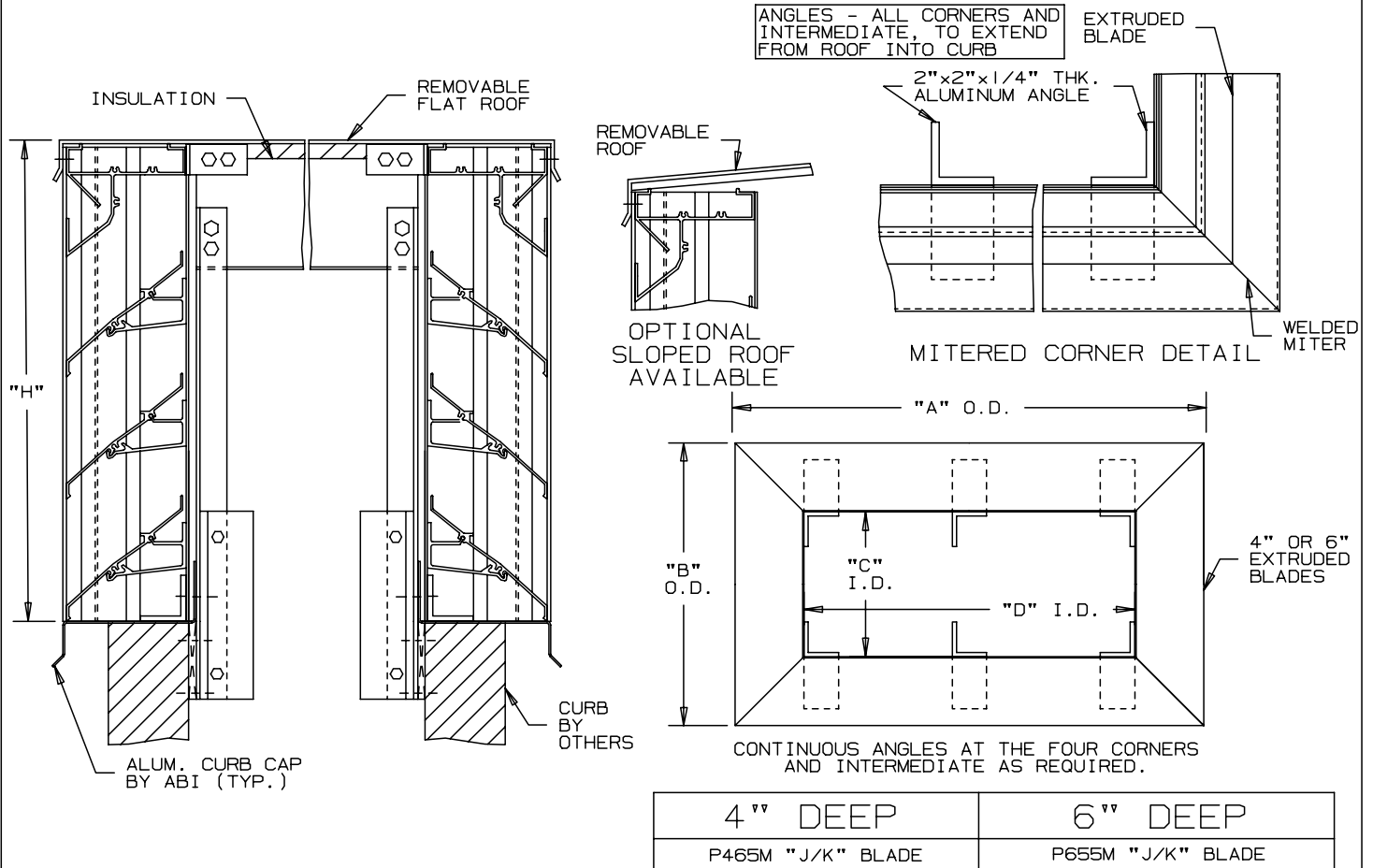
AIR BALANCE, INC.

LOUVERED PENTHOUSES EXTRUDED ALUMINUM

4" AND 6" DEEP BLADES

INTERIOR FASTENING INSTALLATION

MITERED CORNER - "J/K" BLADE - STATIONARY



SPECIFICATIONS

MATERIAL: EXTRUDED ALUMINUM SECTIONS OF () .081", () .125" THICKNESS OF 6063-T52/T6 ALLOY, WITH REINFORCING RIB BOSSES.

ROOF: REMOVABLE ROOF .060" THK. SHEET ALUMINUM REINFORCED WITH ALUMINUM BRACING WHERE REQUIRED TO TAKE A SNOW LOAD OF 40 LBS./SQ.FT. PLUS A REQUIRED SAFETY FACTOR.

INSULATION: UNDERSIDE OF ROOF IS LINED WITH 1/2" THK. INSULATION.

SCREENS: (WHEN INDICATED)
 BIRD SCREEN - 1/2" SQUARE MESH, 19 GA. GALVANIZED STEEL, ON INTERIOR.

NOTE: PENTHOUSE DIMENSIONS "A" OR "B" EXCEEDING 84" SHALL BE SHIPPED IN SECTIONS FOR FIELD ASSEMBLY BY OTHERS.

ITEM	QTY.	"A"	"B"	"C"	"D"	"H"	MULL	TYPE	LOC		
								SCREENS			



AIR BALANCE, INC.
 A Mestek Company
 450 Riverside Drive
 Wyalusing, PA 18853

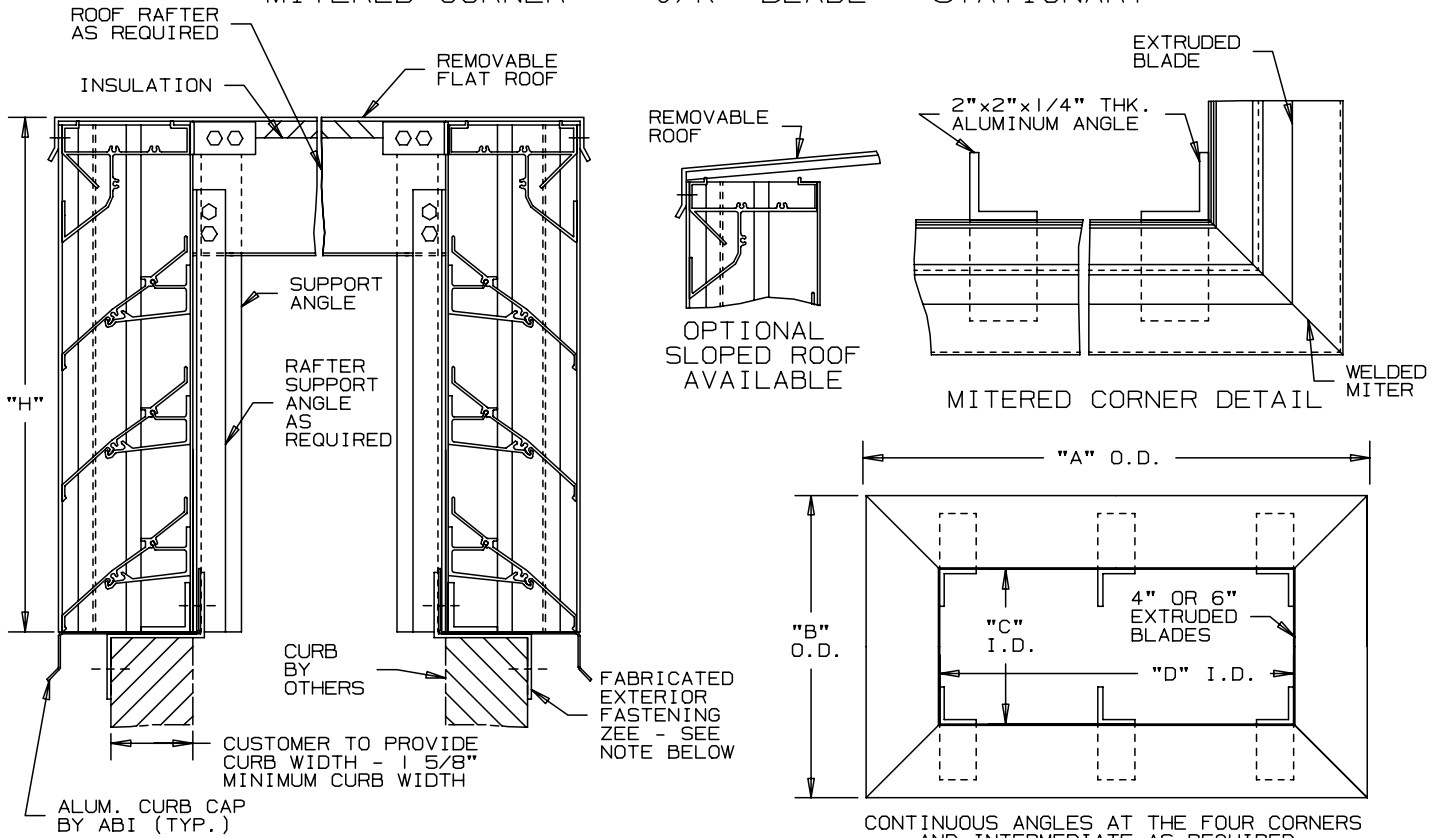
ARCH./ENG.:		
CONTR.:		
PROJECT:		
EDR:	ECN:	JOB:
DATE:	DWN.:	DWG.:

AGENT: _____

AIR BALANCE, INC.

LOUVERED PENTHOUSES EXTRUDED ALUMINUM 4" AND 6" DEEP BLADES

EXTERIOR FASTENING INSTALLATION MITERED CORNER - "J/K" BLADE - STATIONARY




*NOTE:
EXTERIOR MOUNTING ZEE CLIPS SUPPLIED 2"
LONG, SPACED NO MORE THAN 4" FROM EACH
CORNER AND 12" O.C. MAXIMUM.

4" DEEP	6" DEEP
P465M "J/K" BLADE	P655M "J/K" BLADE

SPECIFICATIONS

MATERIAL: EXTRUDED ALUMINUM SECTIONS OF () .081", () .125" THICKNESS OF 6063-T52/T6 ALLOY. WITH REINFORCING RIB BOSSES.
 ROOF: REMOVABLE ROOF .060" THK. SHEET ALUMINUM REINFORCED WITH ALUMINUM BRACING WHERE REQUIRED TO TAKE A SNOW LOAD OF 40 LBS./SQ.FT. PLUS A REQUIRED SAFETY FACTOR.
 INSULATION: UNDERSIDE OF ROOF IS LINED WITH 1/2" THK. INSULATION.
 SCREENS: (WHEN INDICATED)
 BIRD SCREEN - 1/2" SQUARE MESH, 19 GA. GALVANIZED STEEL, ON INTERIOR.
 NOTE: PENTHOUSE DIMENSIONS "A" OR "B" EXCEEDING 84" SHALL BE SHIPPED IN SECTIONS FOR FIELD ASSEMBLY BY OTHERS.

ITEM	QTY.	"A"	"B"	"C"	"D"	"H"	MULL	TYPE	LOC	CURB WIDTH	 UNION MADE
								SCREENS			



AIR BALANCE, INC.
A Mestek Company

450 Riverside Drive
Wyalusing, PA 18853

AGENT: _____

ARCH./ENG.:	
CONTR.:	
PROJECT:	
EDR:	ECN: JOB:
DATE:	DWN.: DWG.: