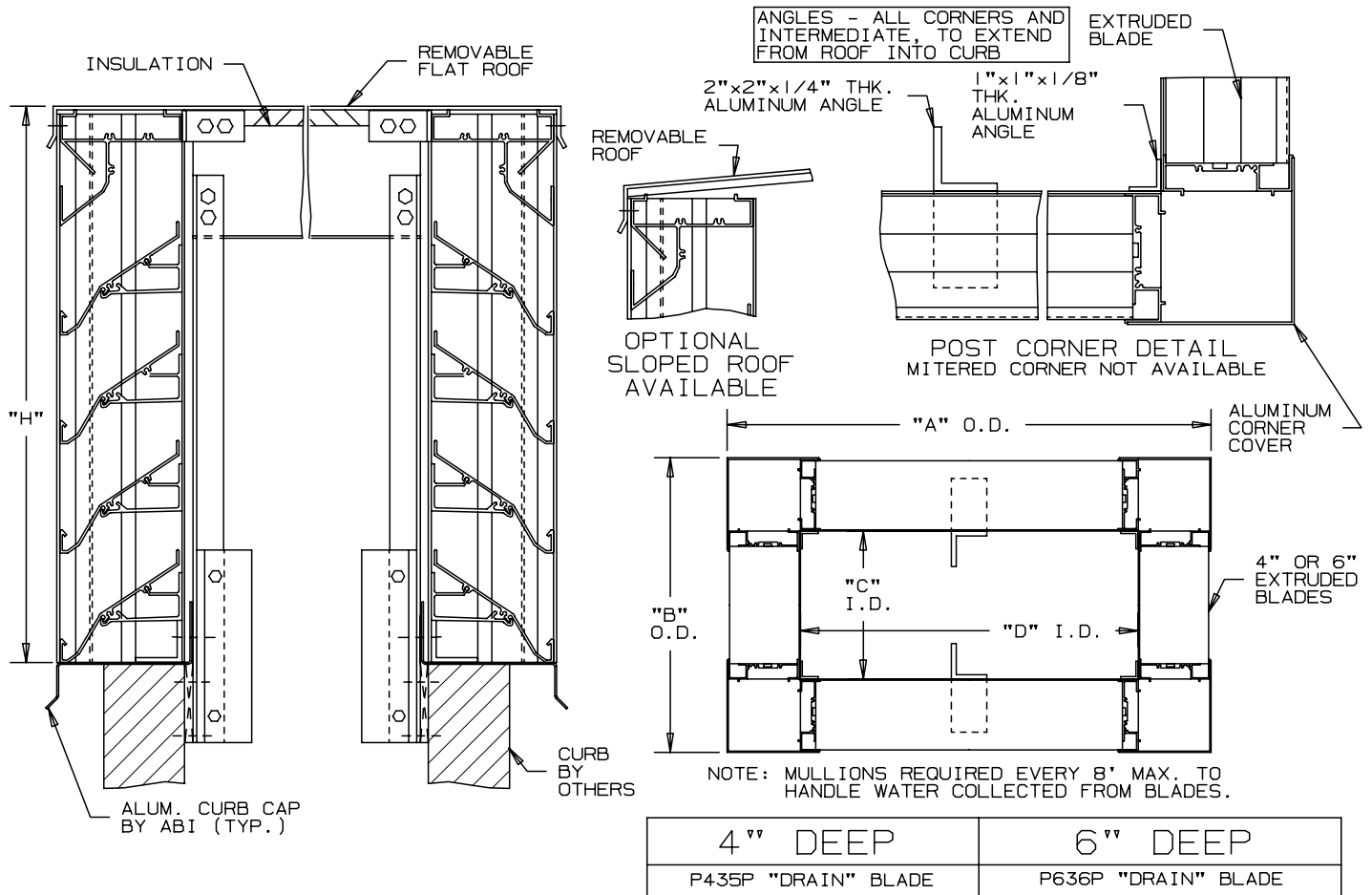


AIR BALANCE, INC.

LOUVERED PENTHOUSES EXTRUDED ALUMINUM 4" AND 6" DEEP BLADES

INTERIOR FASTENING INSTALLATION POST CORNER - 4" OR 6" BLADE WIDTH DRAINABLE - STATIONARY



SPECIFICATIONS

MATERIAL: EXTRUDED ALUMINUM SECTIONS OF () .081", () .125" THICKNESS OF 6063-T52/T6 ALLOY. WITH REINFORCING RIB BOSSES.

ROOF: REMOVABLE ROOF .060" THK. SHEET ALUMINUM REINFORCED WITH ALUMINUM BRACING WHERE REQUIRED TO TAKE A SNOW LOAD OF 40 LBS./SQ.FT. PLUS A REQUIRED SAFETY FACTOR.

INSULATION: UNDERSIDE OF ROOF IS LINED WITH 1/2" THK. INSULATION.

SCREENS: (WHEN INDICATED)
BIRD SCREEN - 1/2" SQUARE MESH, 19 GA. GALVANIZED STEEL, ON INTERIOR.

NOTE: PENTHOUSE DIMENSIONS "A" OR "B" EXCEEDING 84" SHALL BE SHIPPED IN SECTIONS FOR FIELD ASSEMBLY BY OTHERS.

ITEM	QTY.	"A"	"B"	"C"	"D"	"H"	MULL	SCREENS		UNION MADE
								TYPE	LOC	



AIR BALANCE, INC.
A Mestek Company
450 Riverside Drive
Wyalusing, PA 18853

AGENT: _____

ARCH./ENG. : _____

CONTR. : _____

PROJECT: _____

EDR: _____ ECN: _____ JOB: _____

DATE: _____ DWN. : _____ DWG. : _____

