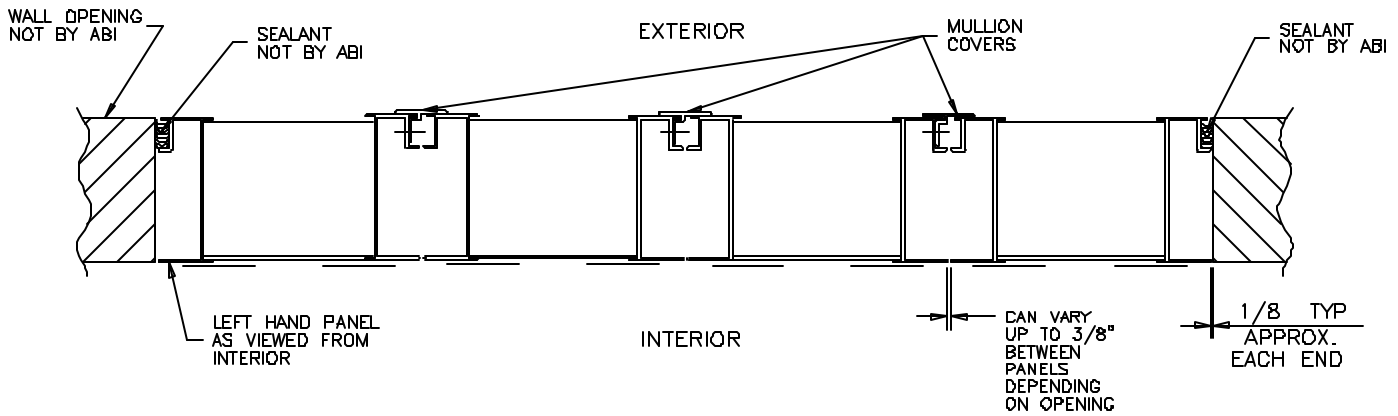


# INSTALLATION INSTRUCTIONS FOR STANDARD VERTICAL AND HORIZONTAL LOUVER MULLIONS

## MULTI-WIDE LOUVERS WITH VERTICAL MULLION COVER(S)



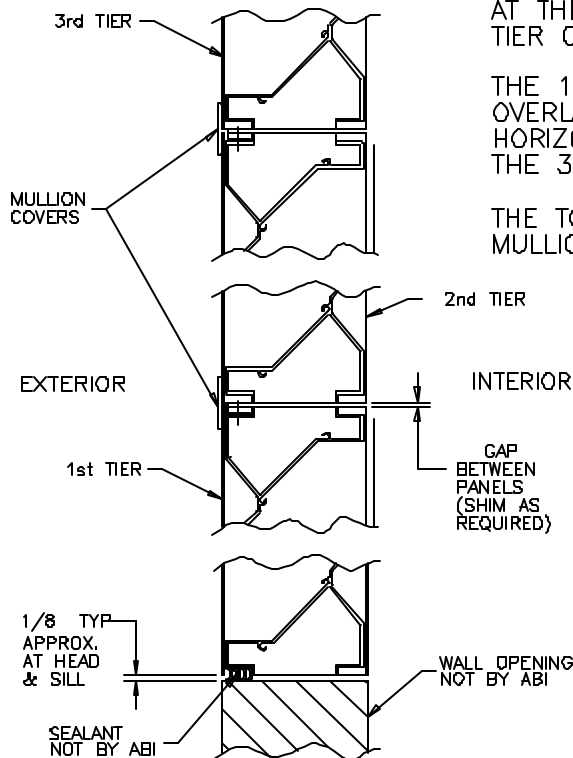
TYPICAL PLAN SECTION VIEW

WHEN INSTALLING FROM INTERIOR SIDE OF OPENING, THE RIGHT HAND SIDE OF EACH LOUVER PANEL WILL HAVE A MULLION COVER ATTACHED EXCEPT FOR THE FAR RIGHT UNIT.

INSTALL UNITS LEFT TO RIGHT.

MULLION COVER(S) ARE NOT REQUIRED TO BE FASTENED TO THE OVERLAPPED UNIT.

## MULTI-HIGH LOUVERS WITH HORIZONTAL MULLION COVER(S)



TYPICAL ELEVATION SECTION VIEW

HORIZONTAL MULLION COVERS ARE ATTACHED AT THE HEAD OF THE 1st, 2nd, 3rd, ETC. TIER OF LOUVERS.

THE 1st TIER HORIZONTAL MULLION COVER OVERLAPS THE 2nd TIER; 2nd TIER HORIZONTAL MULLION COVER OVERLAPS THE 3rd TIER, ETC.

THE TOP TIER UNIT(S) HAS NO HORIZONTAL MULLION COVERS ATTACHED.

OPENINGS THAT REQUIRE MULTIPLE LOUVER PANELS IN BOTH WIDTH AND HEIGHT WILL REQUIRE INTERNAL STRUCTURAL SUPPORTS. IT IS RECOMMENDED THAT LARGE OPENINGS BE DIVIDED WITH STRUCTURAL MEMBERS SO THAT THE LOUVERS WILL SPAN EITHER WIDTH OR HEIGHT WITH A SINGLE PANEL. UNUSUALLY HIGH WIND LOADING MAY REQUIRE STRUCTURAL SUPPORTS ON NON-MULTIPLE WIDE AND MULTIPLE HIGH ASSEMBLIES. STRUCTURAL SUPPORTS AND MOUNTING ACCESSORIES ARE NOT SUPPLIED AS A STANDARD.

**abi**

air balance, inc.

A MESTEK COMPANY

7301 INTERNATIONAL DRIVE HOLLAND, OHIO

### MULLION INSTALLATION INSTRUCTIONS

DRN. BY LMG

DWG. NO.

REV.

DATE 11/10/99

22465-ABI

AUTOCAD: ABI22465